



# OBERDORFER®

An Ingersoll Rand Business

## Model 104M Bronze Close Coupled Centrifugal Pump



### Features

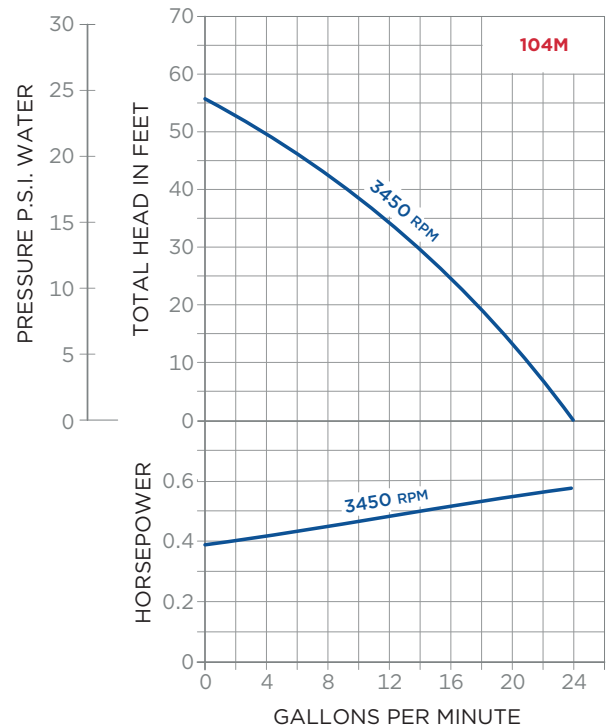
- Inlet 3/4" NPT, Outlet 1/2" NPT
- Rugged bronze construction
- A standard in the marine air conditioning industry
- Extremely quiet operation
- O-ring housing seal eliminates gasket problems
- Teflon barrier seal to protect motor bearings
- Handles contaminated liquids
- Discharge port orientation flexibility
- Mechanical seal - carbon/ceramic - NBR options
- Pump heads mount to standard footed NEMA 56J jet pump motors
- Multiple motor options available
- For industrial version, see Model 600 Series

### Characteristics

This close-coupled pump uses a standard NEMA C-Flange Jet Pump Motor with weld-on base and threaded shaft end to accept the pump impeller. Single phase motors are non-reversible and are wired for the proper pump rotation which is counter-clockwise looking at inlet end of pump. See the dimensional drawing on back. Three phase motors must be checked out for proper rotation when pump is installed. Interchanging of any 2 wires in a 3-phase system will reverse motor rotation.

### Performance

CAPACITY, WATER 70°F



The pump uses a mechanical type shaft seal with a NBR rubber element. It is suitable for water, oils, and some mild solvents and it is limited to 212°F. FKM seals and PTFE seals are available for severe solvents, difficult chemicals, and elevated temperatures.

These centrifugal pumps are not self-priming. They must be installed below the liquid level so that the liquid flows to the pump by gravity (flooded suction). However, if a foot valve is used at the beginning of the suction line, and all air is bled from the pump by manual priming, the pump will lift on the suction side up to 15 feet. Such a system relies entirely on the non-leaking foot valve for starting capability.

The flow of a centrifugal pump can be conveniently controlled by a throttling valve in the discharge line without the need for a relief valve. In centrifugal pumps, the horsepower demand will decrease as the pressure increases. Maximum horsepower occurs with a wide open discharge.



# OBERDORFER®

An Ingersoll Rand Business

## Liquids

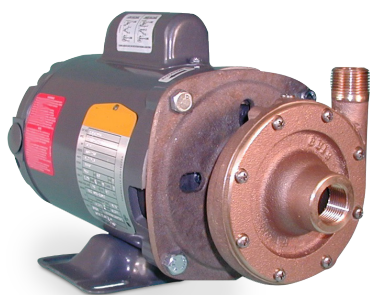
The special pump alloys used provide corrosion resistance to many liquids including water, water solutions, and a wide range of commercial chemicals. Questions as to the chemical compatibility of special liquids should be referred to the factory.

Viscous liquids with a maximum viscosity of 2000 Saybolt Seconds Universal can be pumped. However, when pumping viscous liquids as compared with water, a reduction in flow and pressure occurs and the required horsepower rate increases.

Liquids heavier than water require additional horsepower in direct proportion to the increase in specific gravity. Liquids contaminated with small solids or abrasives can be handled, but a reduction in mechanical seal life must be expected.

## Specifications

MODEL	HP	SF	ENCLOSURE	PHASE	VOLTAGE	SHAFT CONSTRUCTION	MOTOR ITEM 12
OB104M-F13	1/3	1.75	ODP	SINGLE	115	416	OB5859
OB104M-06F13	1/3	1.75	ODP	SINGLE	115	416	OB5859
OB104M-01F26	1/3	1.75	ODP	SINGLE	115/230	MONEL	OB32273
OB104M-06F26	1/3	1.75	ODP	SINGLE	115/230	MONEL	OB32273
OB104MP-F57	1/3	1.75	ODP	THREE	208-230/460	416	OB6996
OB104M-J19	1/2	1.65	ODP	SINGLE	115/230	416	OB5860
OB104M-J20	1/2	1.65	TEFC	SINGLE	115/230	416	OB7976
OB104MP01-J58	1/2	1.00	TEFC	THREE	208-230/460	MONEL	OB33035
OB104MP-J57	1/2	1.60	ODP	THREE	230/460	416	OB6998
OB104M-01J26	1/2	1.65	ODP	SINGLE	115/230	MONEL	OB32332



12500 South Pulaski Road  
Alsip, IL 60803, USA  
Phone (800) 448.1668



# OBERDORFER®

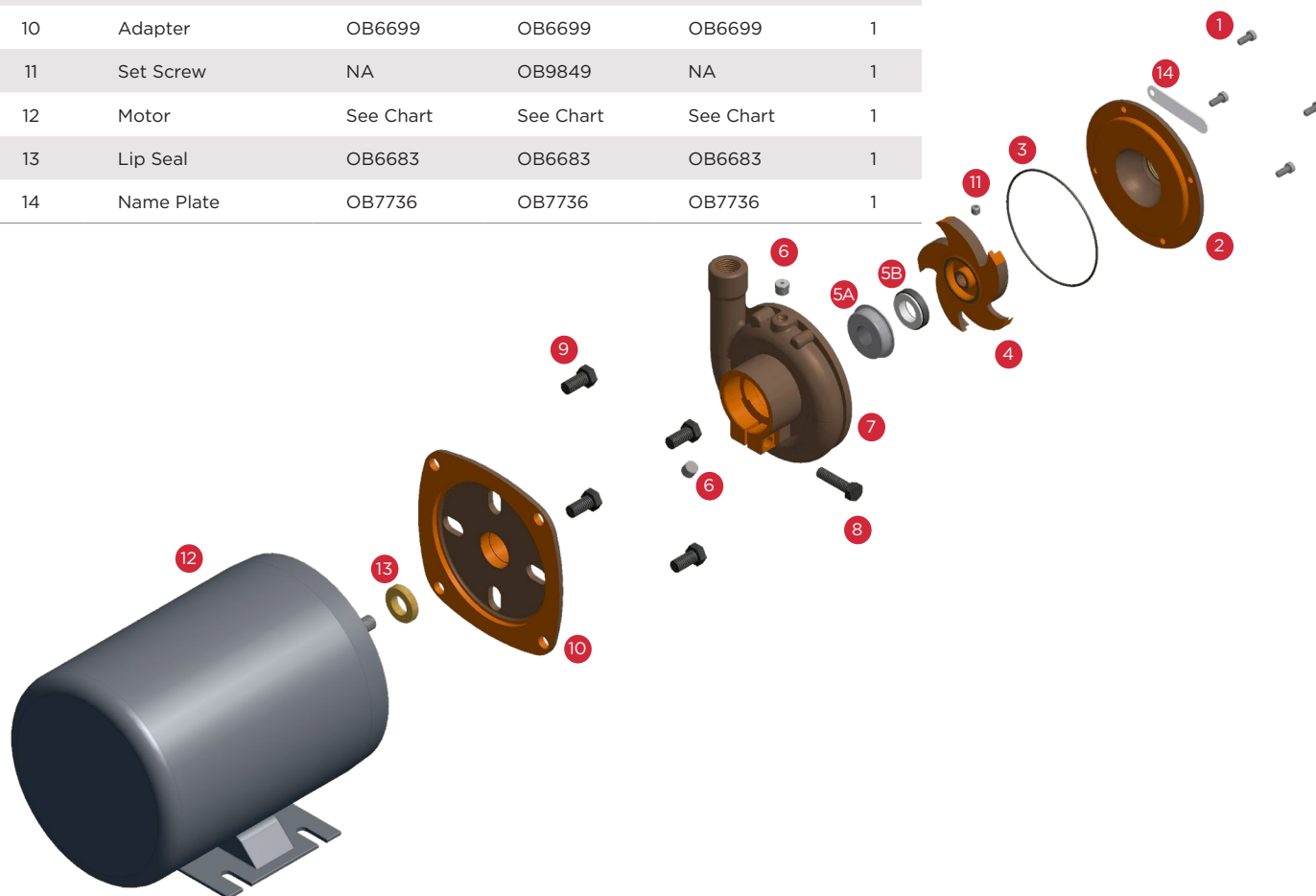
An Ingersoll Rand Business

## Exploded View and Parts List

### PARTS LIST - MODEL OB104M

ITEM NO.	DESCRIPTION	COMPONENT NO.			QTY.
		OB104M	OB104MP	OB104M-06	
1	Screw	OB5385	OB5385	OB5385	4
2	Cover	OB5168-2	OB5168-2	OB5168-2	1
3	O-Ring	OB9797-043	OB9797-043	OB9797-043	2
4	Impeller	OB6033	OB7432	OB6033	1
5A*	Seal Head	OB2913	OB2913	OB2913	1
5B*	Seal Wearface/Seal	OB601801	OB601801	OB601801	1
6	Plug	OB7687	OB5395	OB7687	2
7	Body	OB7515-2	OB7515-2	OB9738-2	1
8	Screw	OB5595	OB5595	OB5595	1
9	Screw	OB5411	OB5411	OB5411	4
10	Adapter	OB6699	OB6699	OB6699	1
11	Set Screw	NA	OB9849	NA	1
12	Motor	See Chart	See Chart	See Chart	1
13	Lip Seal	OB6683	OB6683	OB6683	1
14	Name Plate	OB7736	OB7736	OB7736	1

REPAIR KIT	
OB104M	OB10720
OB104MP	OB12173
OB104M-06	OB10720
Items Included	3, 4, 5A, 5B, 11 & 13



**IR Ingersoll Rand**

12500 South Pulaski Road  
Alsip, IL 60803, USA  
Phone (800) 448.1668



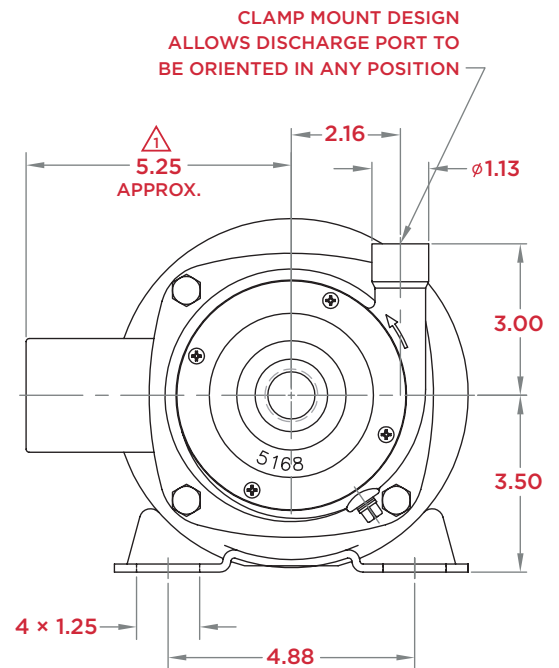
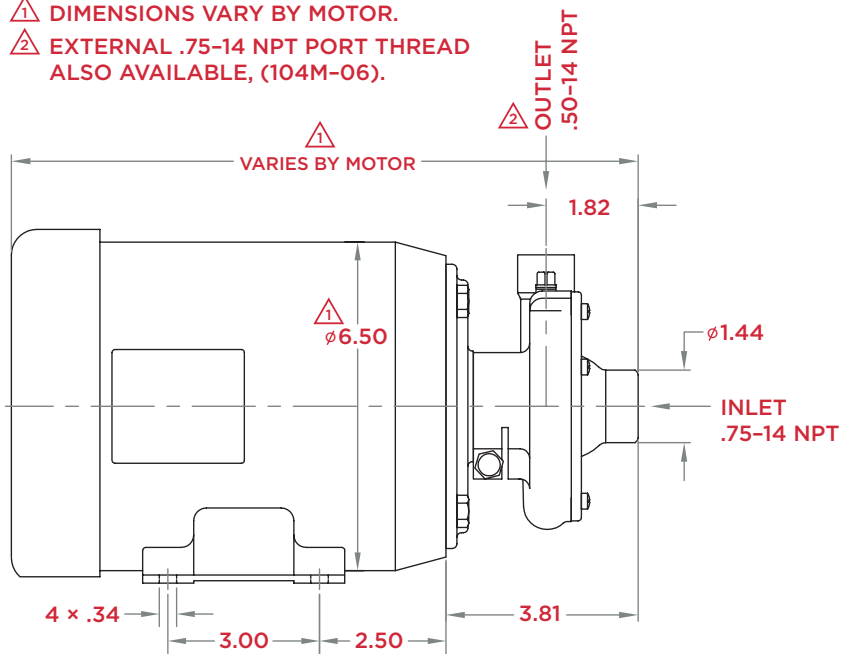
**OBERDORFER**<sup>®</sup>

An Ingersoll Rand Business

## Dimensions

⚠ DIMENSIONS VARY BY MOTOR.

⚠ EXTERNAL .75-14 NPT PORT THREAD ALSO AVAILABLE, (104M-06).



12500 South Pulaski Road  
Alsip, IL 60803, USA  
Phone (800) 448.1668